



Blueway # 5

Dennis's Pasture

www.BerkeleyOutdoorLife.com





Convenient Functionality Built into This Guide

Map 1 of 2 - Santee Canal N. Moultrie




This map corresponds with route directions numbered 1 - 5, and 8.

On Map Pages:

Using your phone (or touch-screen enabled device), tap any of the route numbers to bring up a map of the exact location!



Route - Santee Canal N. Moultrie

Route Directions	
1	From the boat ramp at Angel's Landing Marina, turn left, heading in a northeast direction. LOOK →  Click on individual route directions to bring up map of exact location!
2	At 0.1 mile, pass by island of tall grass. It's best to pass on the left side, closest to the mainland. Continue in slight northeast direction.
3	Pass by tip of island at 0.6 miles. Begin to turn even more northeastern direction towards another large island 0.3 mile away.
4	At 0.9 mile, paddle around southern tip of island, head into center of bay, paddling towards upper right corner of bay. This is where the canal opening is located.
5	Enter Santee Canal at 1.4 miles. This is a narrow, shallow waterway (no more than 20 yards wide and maintains a depth of 4-5 feet). Enjoy the calm waters of the Santee Canal. Keep an eye out for wildlife, including alligators, deer, wild boar and a variety of waterfowl.
6	Come to railroad crossing over the canal at 2.8 miles. The canal will begin to narrow shortly after the railroad crossing.
7	At 3.2 miles, come to the obvious end of the canal. Return the same way you came.
8	Option: Turn a hard left when leaving the canal and head into a field of lilies. This is picturesque and worth the extra 20-30 minutes, particularly when everything is in bloom!

On Route Direction Pages:

Tap anywhere in the individual direction boxes to bring up a map of the exact location!



Dennis's Pasture – E. Lake Moultrie

5



Barred Owl in Dennis's Pasture near the dike system on Lake Moultrie.

Summary

Dennis's Pasture, also known as the "Cow Pasture," comprises of the area between The Jungle and Bonneau Beach. It consists of numerous small islands and open bays of varying depths and vegetation. It's unique because the density of islands and cypress groves offer good wind protection. You can easily spend a full day of paddling the various bays, way ditch and canal.

Difficulty

Easy to Moderate

Distance

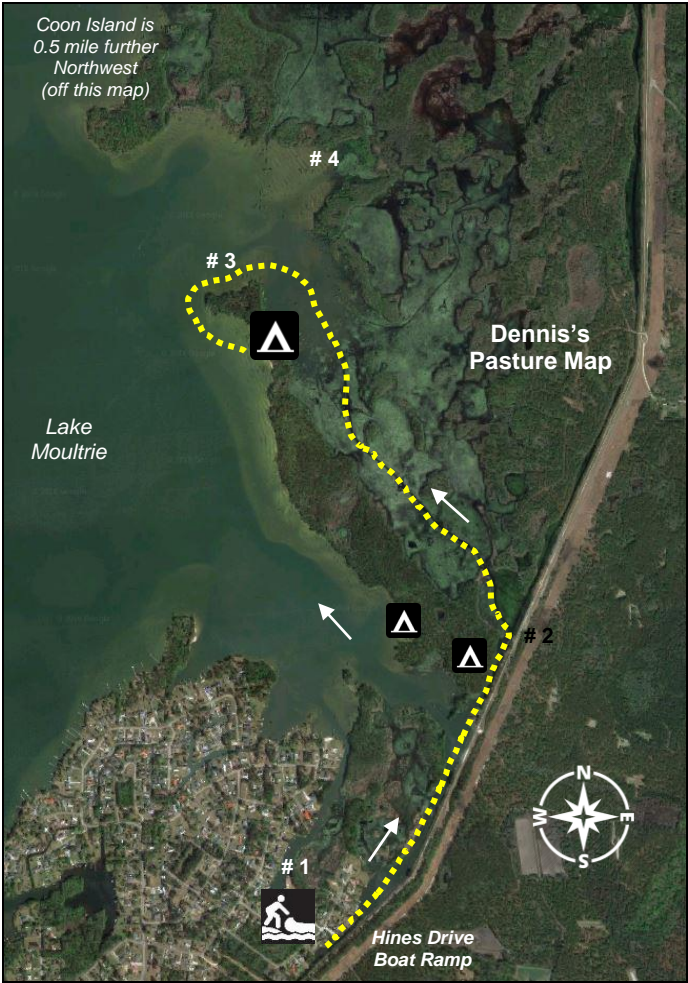
4 - 6 miles, roundtrip, varies based on exploration.

Time

2 - 3 hours, but take your time to discover all this has to offer

Crowds	Moderate. The area can be popular with anglers.
Boat Type	Kayaks or canoes 10 feet or longer. Paddle boards are not recommended.
Put In / Take Out	<p>Hines Drive Bonneau Beach Landing, At corner of Hines Lane & Driftwood Drive, Bonneau, SC 29431</p> <p>GPS: 33.332530, -79.982775 33°19'57.1"N, 79°58'58.0"W</p> <p><u>Directions:</u> All GPS and mapping applications recognize this address.</p>
Fees/Permits	None
Current	Negligible, generally southwest direction
Tidal Influence	None
Precautions:	You'll have protection from some winds with a few islands and dikes, however, there are plenty of open spaces in Dennis's Pasture where winds can intensify resulting in waves/whitecaps.

Map – Dennis's Pasture



This map corresponds with route directions numbered 1 - 5 on page 6.

Route Directions – see map on page 5	
1	From the boat ramp, turn left, heading in a northern direction up the canal. This is an area of frequent boat traffic.
2	At 0.9 mile, bear left in northwest direction towards the namesake Pasture. Continue through the Pasture for the next 0.75 mile. This is a beautiful area with acres of blooming lilies and golden lotus in spring and summer, and it's a great place to see osprey, anhinga, cormorants, and bald eagles. Treat this as an area of exploration.
3	At 1.9 miles, round the tip of Eady Island, then head south down the other side. About 1,000-ft. after rounding the island, there is a nice beach with large campsite. This is a great place to stop for a break, lunch and spend some time enjoying the views.
4	Dennis's Pasture is best suited as exploration. We encourage you to look around, admire the flora and fauna, and enjoy this popular paddle. Return the same way you came.



You'll paddle by acres of lily fields in the warmer months.



Good times, big smiles and laughter at Dennis's Pasture.